



Joint MPI & Customs DTR Seafreight Project Webinar for CBAFF – 19th July 2023

DTR Sea Freight Project

Ministry for Primary Industries
Manatū Ahu Matua



DTR Seafreight Implemented

Domestic Transshipment Request (DTR) for Seafreight has been implemented 3 July 2023.

A DTR is now required to move uncleared sea-freight from one approved facility (CCA/TF) to another approved facility.

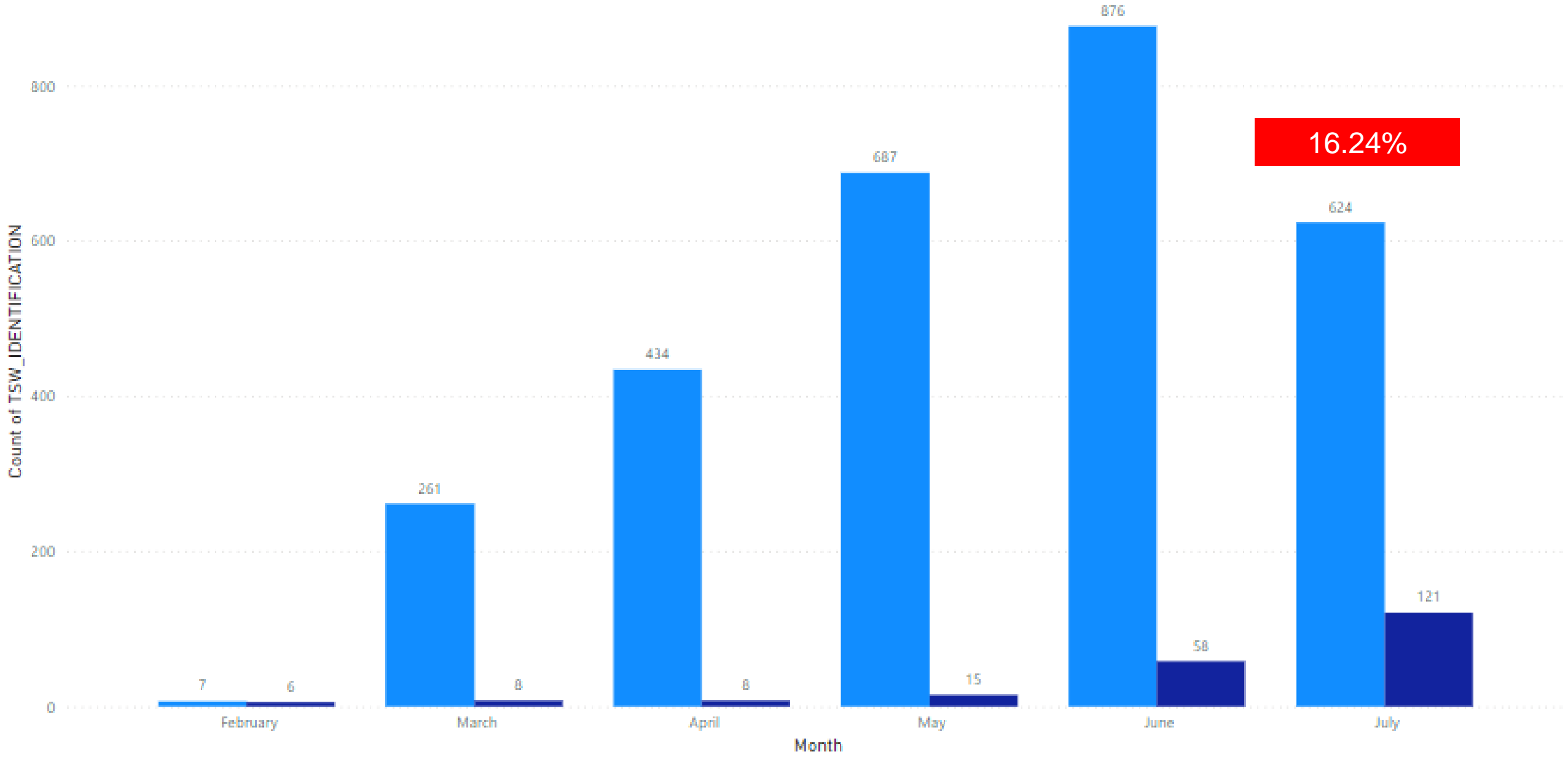
FAK movements from Port to CCA/TF

Submitters:

1. For DTRs to be successfully processed for FAK movements from Port to CCA/TF. MPI requires the following attachments to be submitted
 - A. Quarantine Declaration
 - B. Bill of Lading
 - C. Manifest
2. QD to be entered on the lodgement correctly as per what is on the physical QD document e.g. YYNNN. Make sure the QD is entered against each consignment
3. Location of Goods (LoG) refers to the premises where the consignment will be held awaiting clearance. Therefore, the LoG needs to be the [correct port codes](#) (UNLOCODE) for FAK movements not the CCA code.

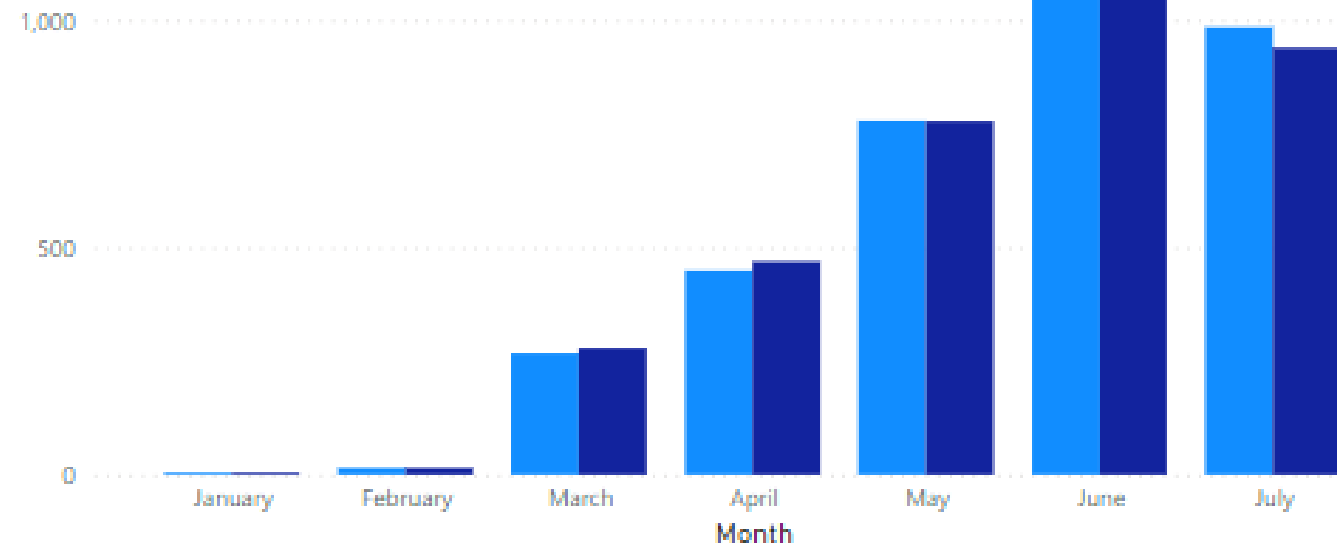
DTR REQUESTED FOR MOVEMENT OFF PORT WITH NO DOCUMENTS ATTACHED

combined docs ● Doc attached ● No Docs



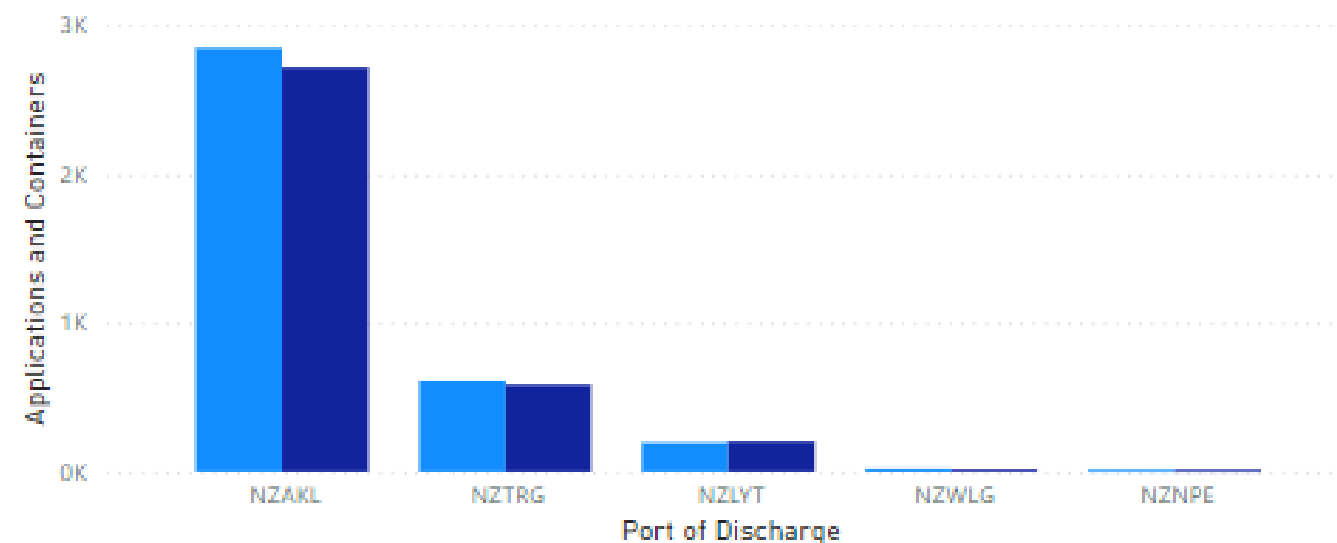
Number of FAK applications per month

● DTRs & Containers ● Count of IDENTIFIER



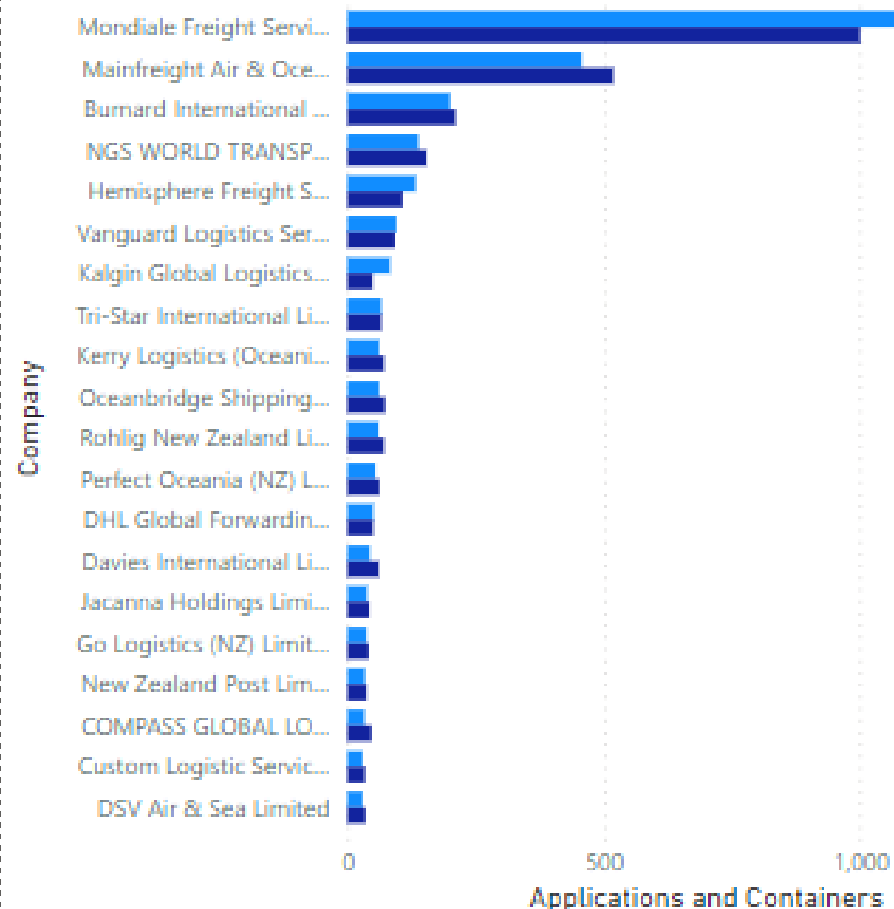
Applications and Containers by Port of Discharge

● Applications ● Containers



Total FAK Applications and Containers by Company

● Applications ● Containers



3594

DTRs SUBMITTED

3409

CONTAINERS MOVED

Status of Ports

Port	System / Interface	FAK from Port to CCA/TF
Port of Tauranga	Navis N4 / PortConnect	DTR Active
Ports of Auckland	Navis N4 / PortConnect	DTR Active
Lyttelton Port	Navis N4	DTR Active
Timaru	Navis N4 / PortConnect	DTR Active
Northport	Navis N4 / PortConnect	TESTING
Centre Port	Navis Master Terminal	DEVELOPMENT
Port Nelson	Navis Master Terminal	DEVELOPMENT
Port Otago Ltd	Navis Master Terminal	DEVELOPMENT
South Port	Navis Master Terminal	DEVELOPMENT
Napier Port Ltd	Navis N4	DTR Active
Port Taranaki	Email	DTR Active
Mount Maunganui	Email	DTR Active

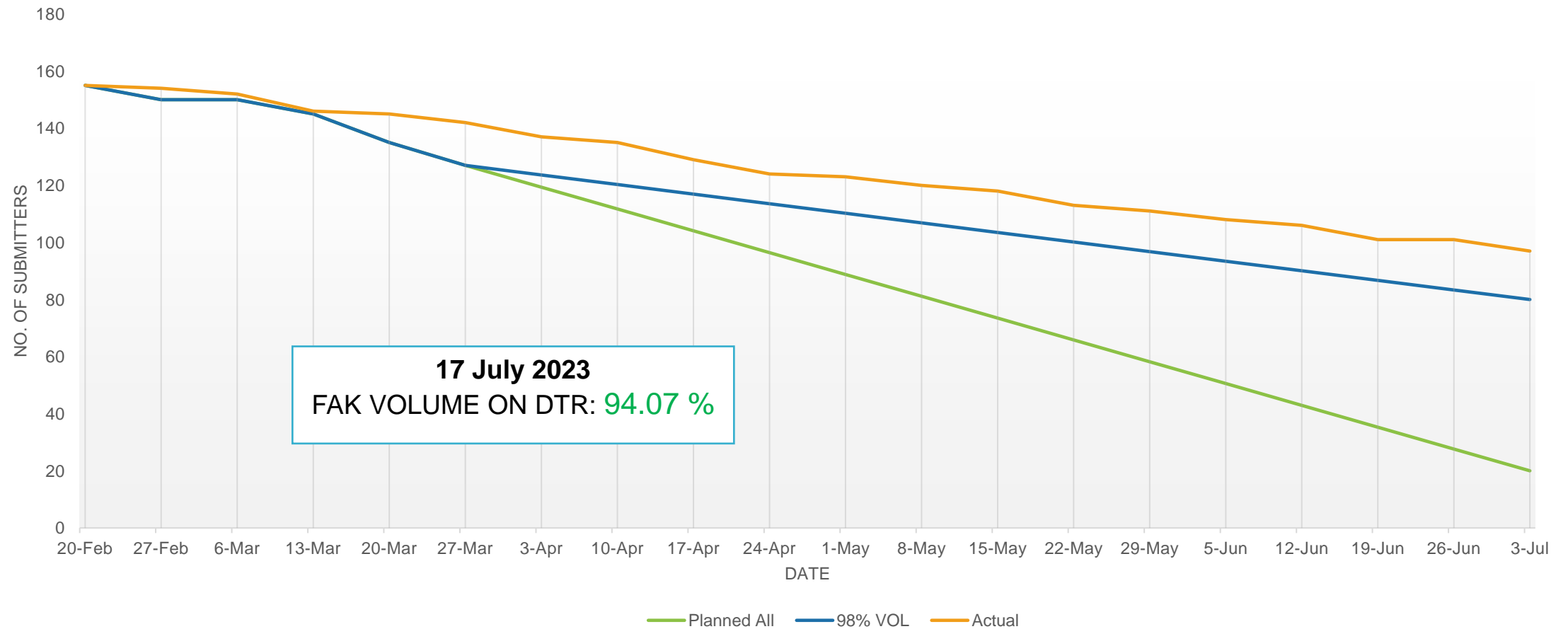
- 98% of FAK imports take place through Auckland, Tauranga and Lyttelton

■ LIVE
 ■ IN PROGRESS
 ■ DELAYED



Pilot Partner Status – Status of submissions

FAK DTR Burndown



DTRs for movement of devanned LCL consignments between CCA/TFs



Uncleared LCL consignments from CCA/TF to CCA/TF

A DTR will be required for the movement of devanned LCL consignments from CCA/TF to CCA/TF.



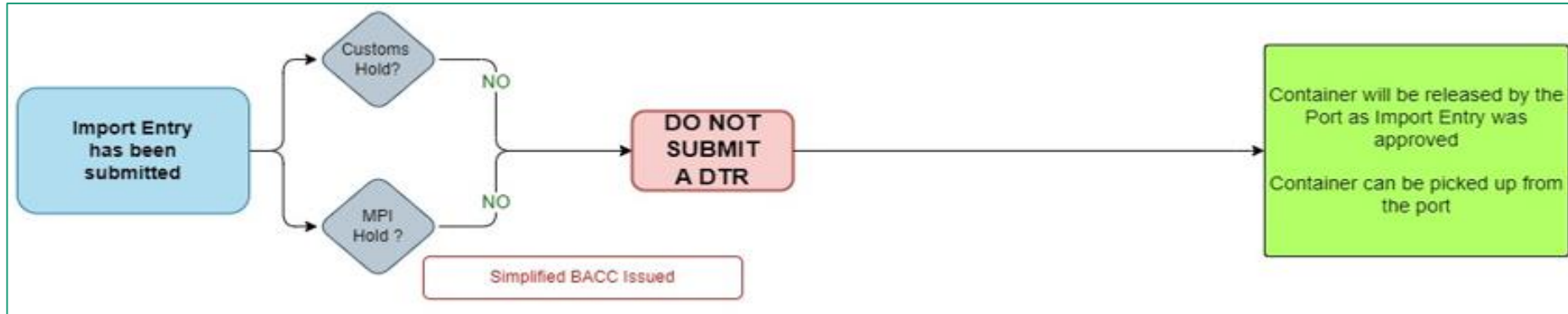
If you receive the following error: *"TF/CF specified as Transit Destination must be approved for containers"*. The DTR will be unable to be submitted. You are permitted to use your Collectors Permit to move these consignments in this instance. This is a known issue that will be resolved in the near future.

FCL Process

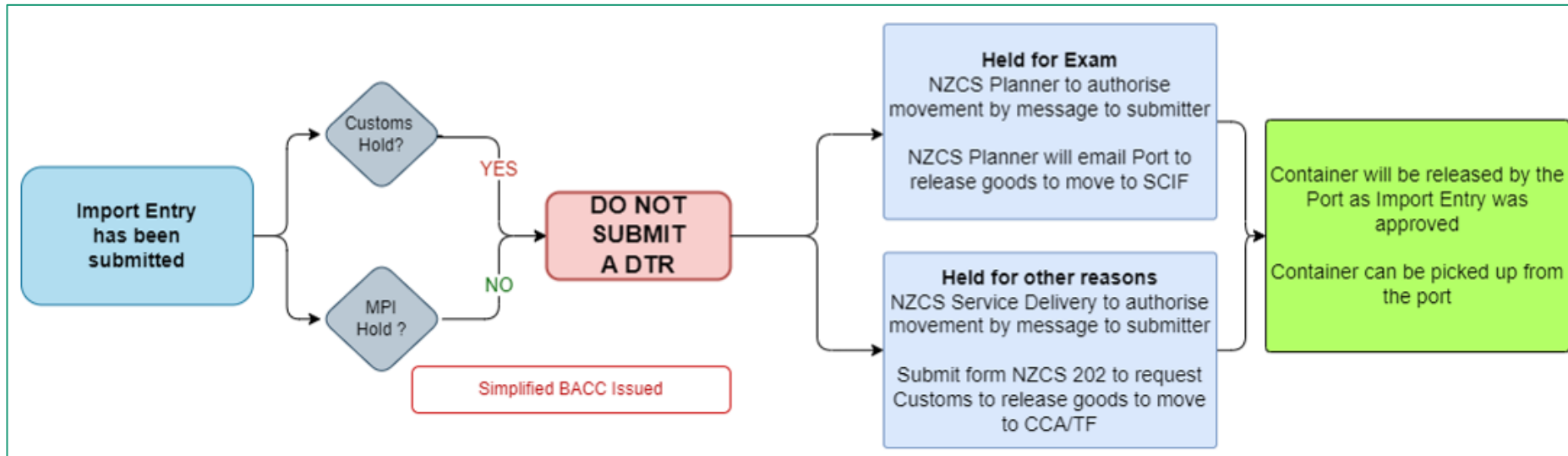


IMPORT DECLARATION SUBMITTED

1

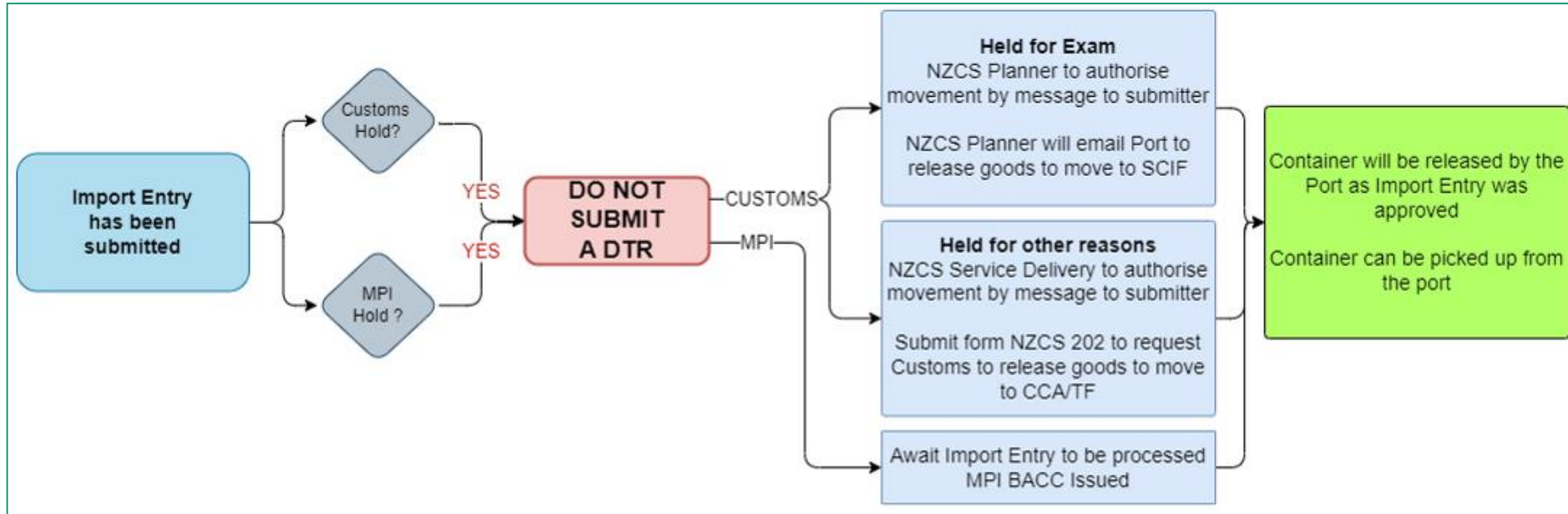


2

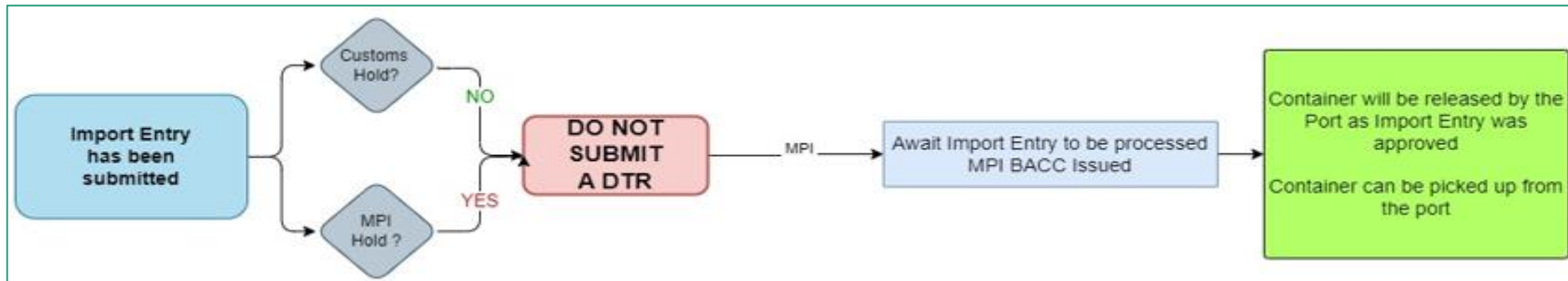


IMPORT DECLARATION SUBMITTED

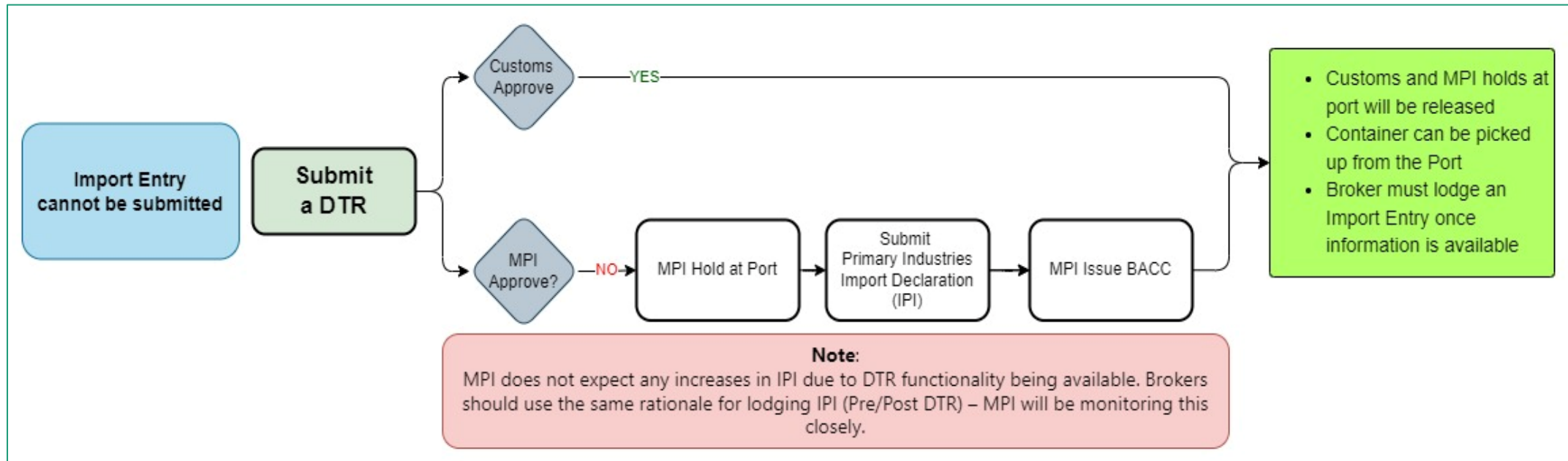
3



4



IMPORT DECLARATION CANNOT BE SUBMITTED



This process should be used in exceptional circumstances only when a full Import Declaration cannot be submitted

More Information?

- <https://www.customs.govt.nz/business/trade-single-window/domestic-transshipment-request/dtr-sea-information/> - DTR Sea Information Page
- <https://www.customs.govt.nz/business/trade-single-window/domestic-transshipment-request/domestic-transshipment-request-dtr-sea-freight-faqs/> - DTR Sea FAQs

Questions

