



Joint MPI & Customs DTR Seafreight Project Webinar for CBAFF – 5th July 2023

DTR Sea Freight Project

Ministry for Primary Industries
Manatū Ahu Matua



Officially Live with DTR Seafreight

As of **Monday, 3 July 2023**, a Domestic Transhipment Request (DTR) is now required to move uncleared sea-freight from one approved facility (CCA/TF) to another approved facility.

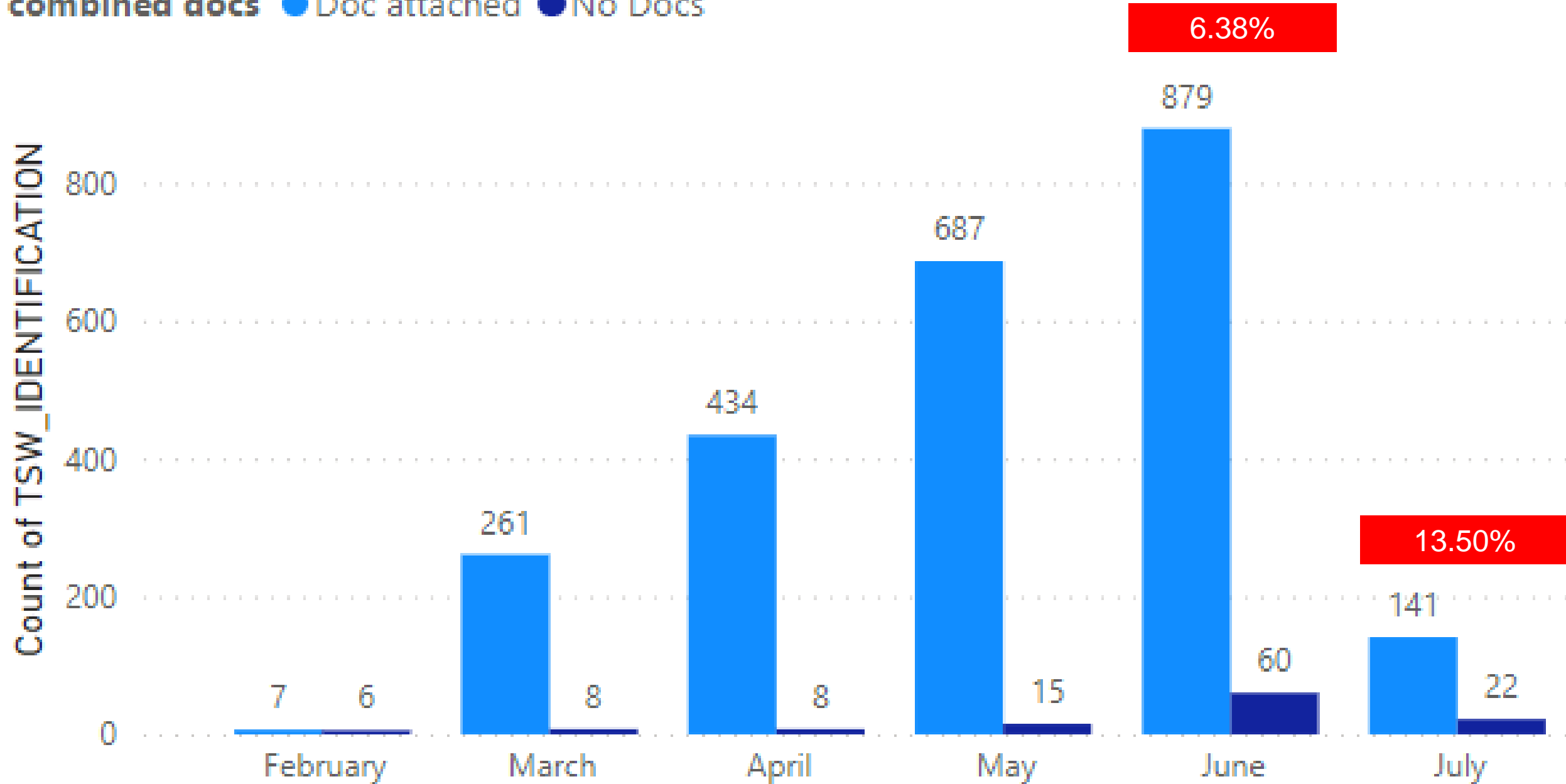
FAK movements from Port to CCA/TF

Submitters:

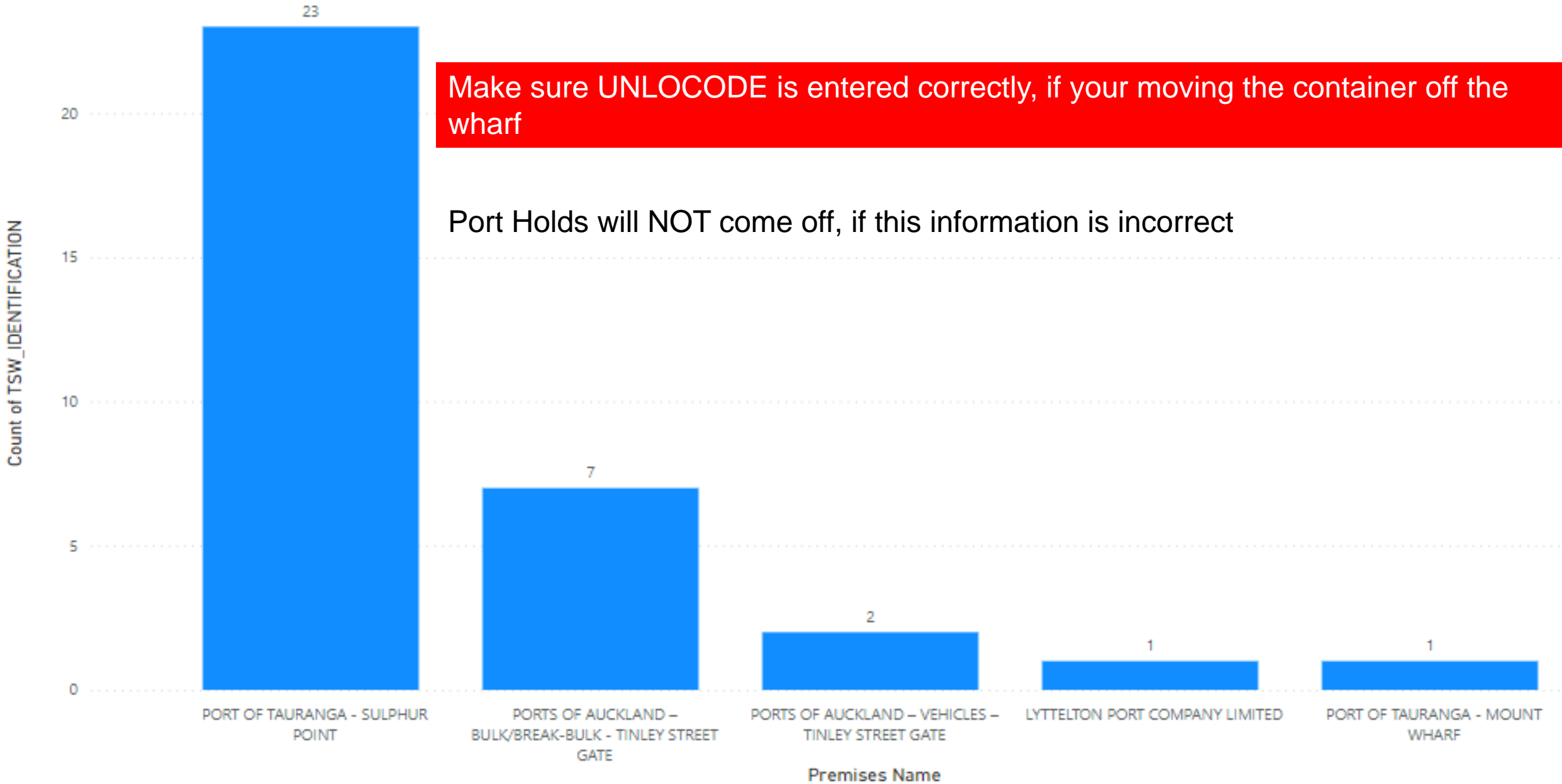
1. For DTRs to be successfully processed for FAK movements from Port to CCA/TF. MPI requires the following attachments to be submitted
 - A. Quarantine Declaration
 - B. Bill of Lading
 - C. Manifest
2. QD to be entered on the lodgement correctly as per what is on the physical QD document e.g. YYNNN. Make sure the QD is entered against each consignment

DTR requested for movement off port with no documents attached

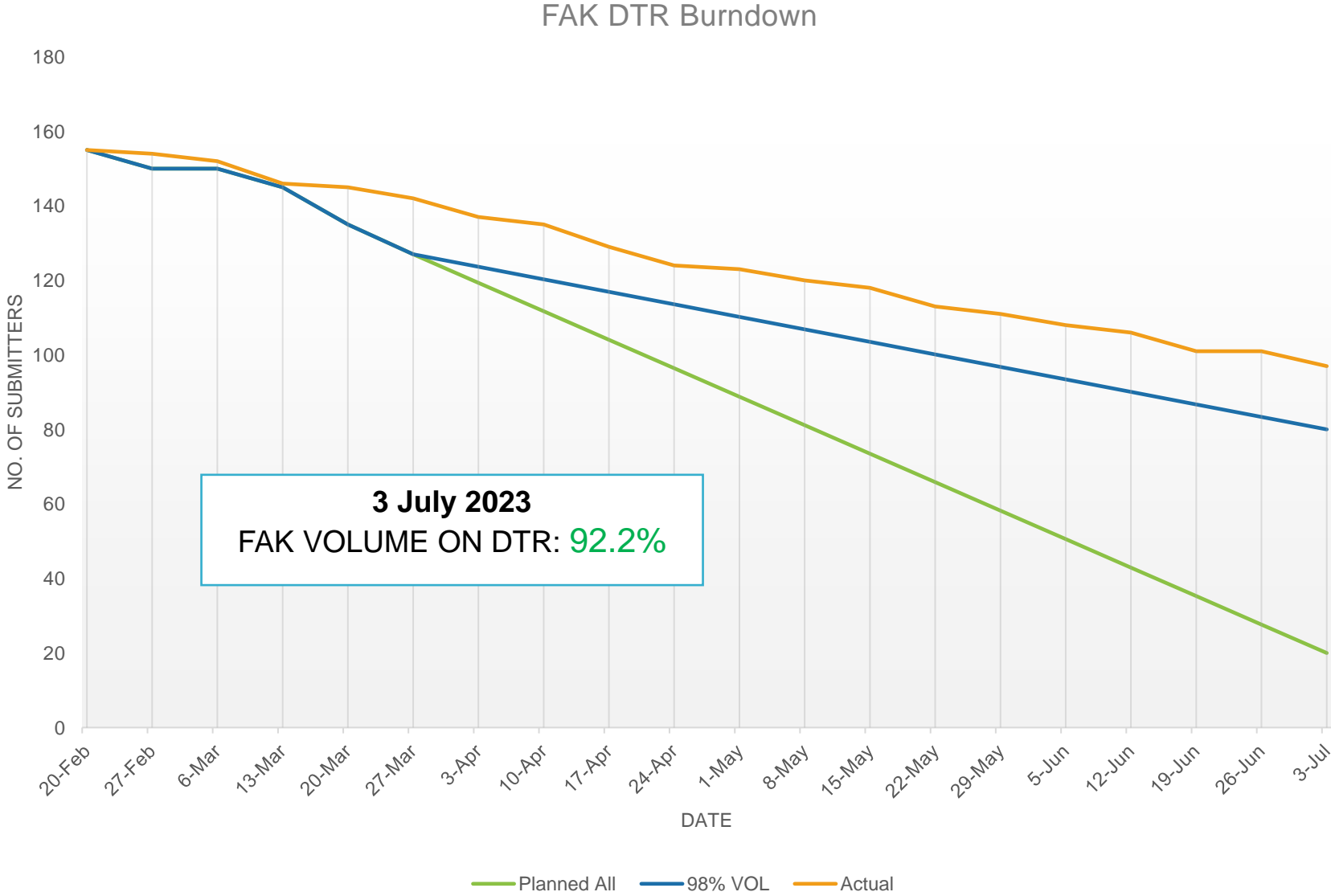
combined docs ● Doc attached ● No Docs



MOVEMENT OFF PORT REQUESTED BUT GOODS LOCATION IS NOT A UNLOCODE



Pilot Partner Status – Status of submissions



Uncleared LCL consignments from CCA/TF to CCA/TF

A DTR will be required for the movement of devanned LCL consignments from CCA/TF to CCA/T.



If you receive the following error: *“TF/CF specified as Transit Destination must be approved for containers”*. The DTR will be unable to be submitted. You are permitted to use your Collectors Permit to move these consignments in this instance. This is a known issue that will be resolved in the near future.



DTRs for LCL Training - Cargowise



NZCS Collectors Permit

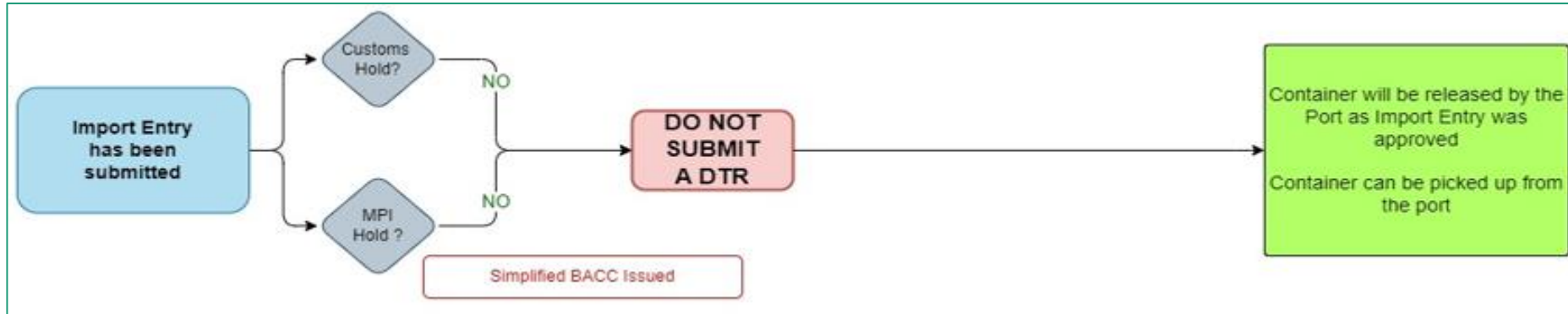
- The NZCS Collectors Permit will be phased out once all New Zealand ports are DTR Active – 1st September 2023
- **The NZCS Collectors Permit will not be accepted by DTR Active Ports**

FCL Process

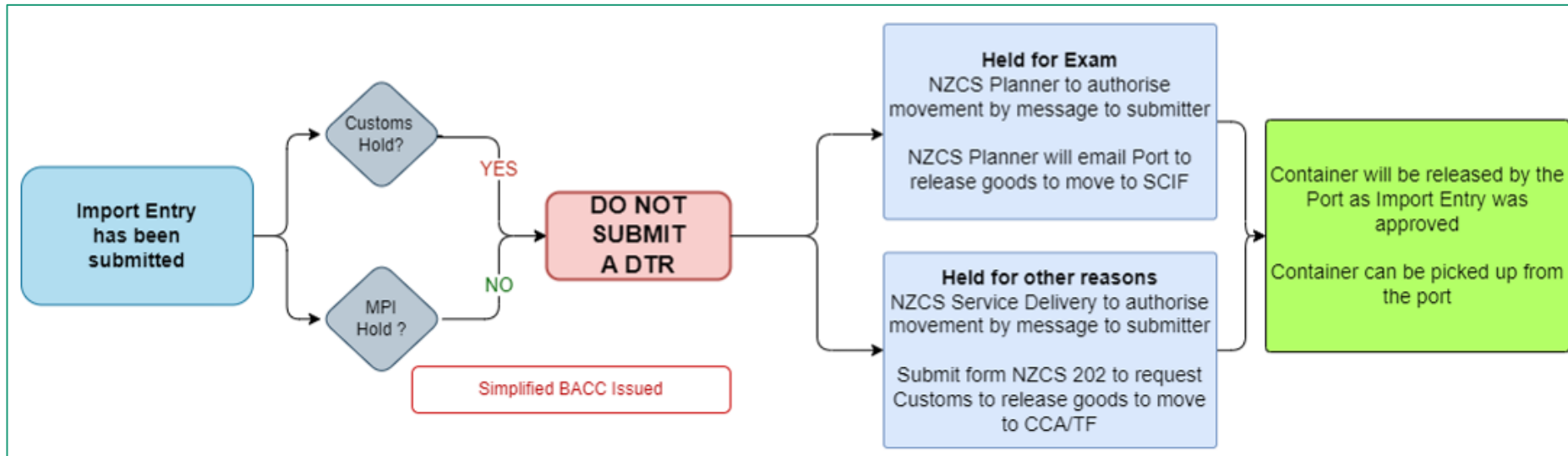


IMPORT DECLARATION SUBMITTED

1

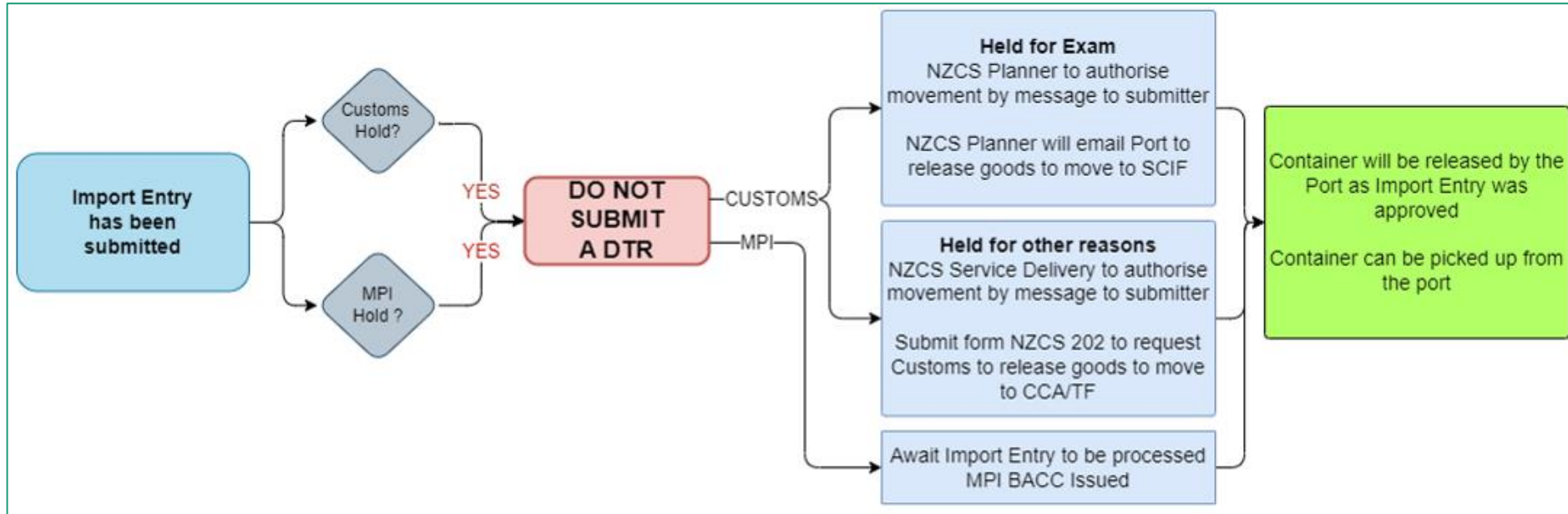


2

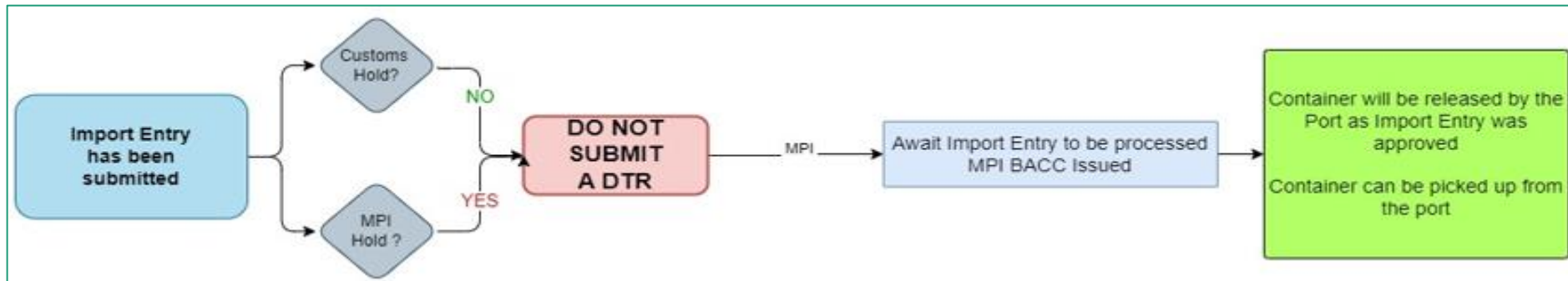


IMPORT DECLARATION SUBMITTED

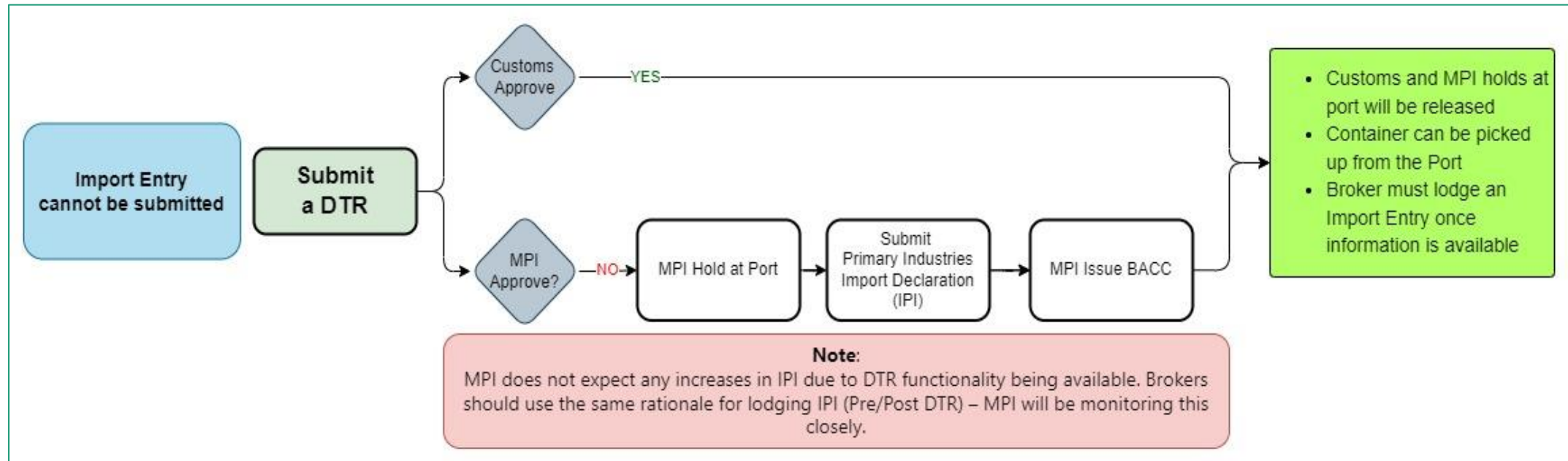
3



4



IMPORT DECLARATION CANNOT BE SUBMITTED



This process should be used in exceptional circumstances only when a full Import Declaration cannot be submitted

More Information?

- <https://www.customs.govt.nz/business/trade-single-window/domestic-transshipment-request/dtr-sea-information/> - DTR Sea Information Page
- <https://www.customs.govt.nz/business/trade-single-window/domestic-transshipment-request/domestic-transshipment-request-dtr-sea-freight-faqs/> - DTR Sea FAQs

Questions

